

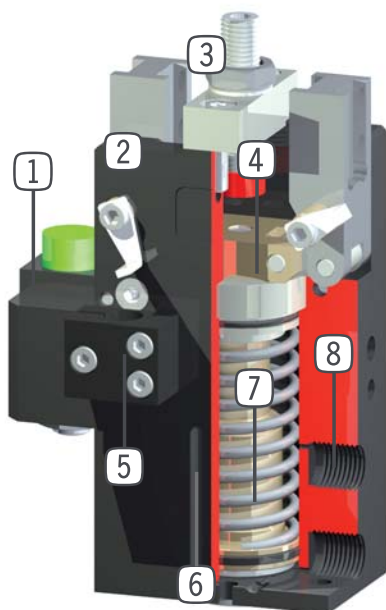
**Product information:**

- ▶ Wedge hook mechanism
- ▶ Infinitely adjustable stroke from 1 - 180°
- ▶ High gripping force up to 4250N
- ▶ Central gripping realized by synchronized positively driven guide
- ▶ Maintenance free to 5 million cycles
- ▶ High temperature resistant version (up to 150°C) available upon request

Versions:

e.g. order no.: **GK15N** ☐ -B

- ☒ ▶ External gripping, mechanical self-locking at 0° opening angle and spring closing

**Design:**

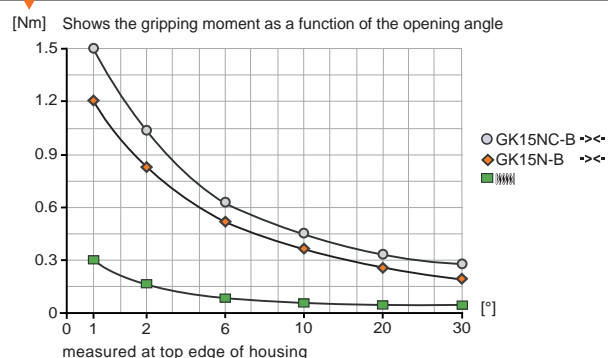
- ① **Buffer stop**
 - absorption of kinetic energy for heavy and long gripper fingers
- ② **Robust, lightweight housing**
 - hard coated anodized aluminium alloy
- ③ **Stroke adjustment screw**
 - infinitely adjustable opening stroke
- ④ **Guided toggle lever mechanism**
 - synchronized gripper jaw movement
 - mechanically self-locking
- ⑤ **Mounting block**
 - mounting for inductive proximity switch
- ⑥ **Integrated slot**
 - mounting and positioning of magnetic field sensors
- ⑦ **Integrated gripping force safety device**
 - spring integrated into cylinder as energy storage
- ⑧ **Energy supply**
 - at several sides possible

► Installation size: **GK15**

Dimension			Forces and moments		
B [mm]	H [mm]*	T [mm]	Mr [Nm]	My [Nm]	Fa [N]
28	64.7	19.8	0.4	0.4	75

Technical Data**				
Order no.	Stroke per Jaw [°]	Weight [kg]	Gripping moment closing [Nm]	Gripping force closing [N]
GK15N-B	90	0.095	1.2	70
GK15NC-B	90	0.12	1.6	100

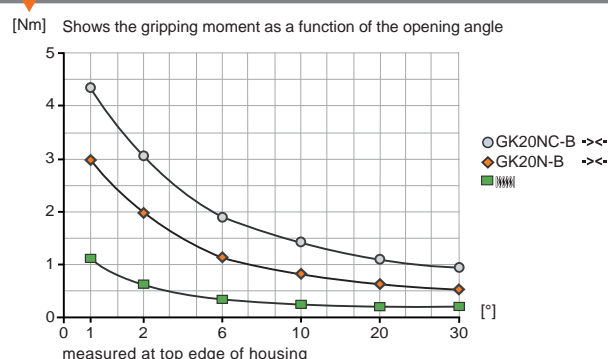
Gripping moment diagram

► Installation size: **GK20**

Dimension			Forces and moments		
B [mm]	H [mm]*	T [mm]	Mr [Nm]	My [Nm]	Fa [N]
39	86.9	28	0.8	1	150

Technical Data**				
Order no.	Stroke per Jaw [°]	Weight [kg]	Gripping moment closing [Nm]	Gripping force closing [N]
GK20N-B	90	0.225	3	150
GK20NC-B	90	0.3	4.2	210

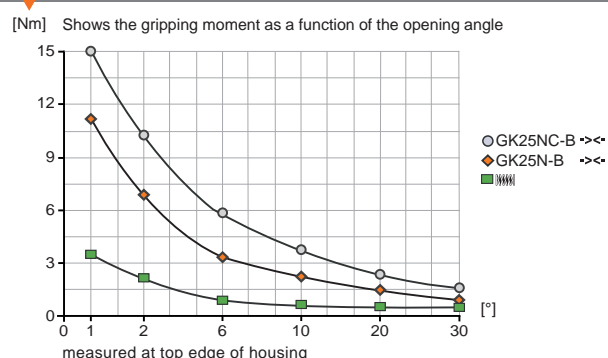
Gripping moment diagram

► Installation size: **GK25**

Dimension			Forces and moments		
B [mm]	H [mm]*	T [mm]	Mr [Nm]	My [Nm]	Fa [N]
50	105.4	34.4	2.5	4	250

Technical Data**				
Order no.	Stroke per Jaw [°]	Weight [kg]	Gripping moment closing [Nm]	Gripping force closing [N]
GK25N-B	90	0.42	10.5	440
GK25NC-B	90	0.58	14.5	610

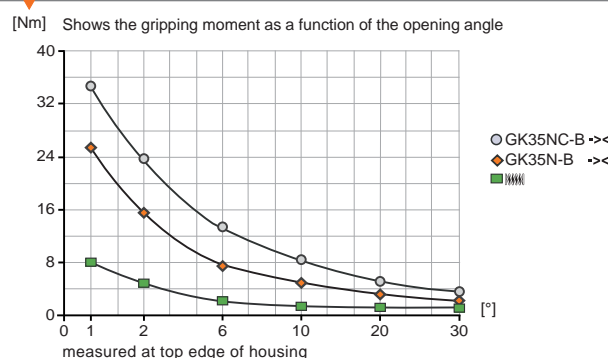
Gripping moment diagram

► Installation size: **GK35**

Dimension			Forces and moments		
B [mm]	H [mm]*	T [mm]	Mr [Nm]	My [Nm]	Fa [N]
65	144.5	39.4	12	20	400

Technical Data**				
Order no.	Stroke per Jaw [°]	Weight [kg]	Gripping moment closing [Nm]	Gripping force closing [N]
GK35N-B	90	0.9	27.5	950
GK35NC-B	90	1.2	36.5	1250

Gripping moment diagram

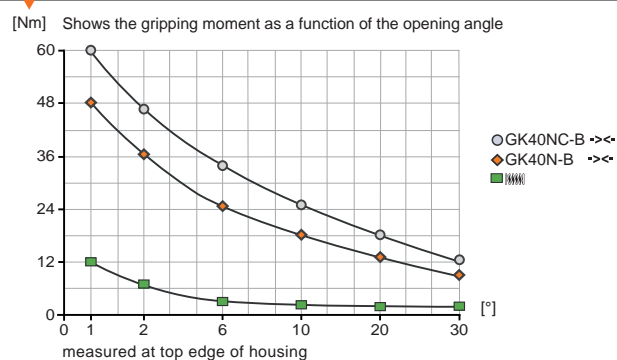


► Installation size: **GK40**

Dimension			Forces and moments		
B [mm]	H [mm]*	T [mm]	Mr [Nm]	My [Nm]	Fa [N]
79	172	49.4	17	30	600

Technical Data**				
Order no.	Stroke per Jaw [°]	Weight [kg]	Gripping moment closing [Nm]	Gripping force closing [N]
GK40N-B	90	1.7	47	1400
GK40NC-B	90	2.2	62	1820

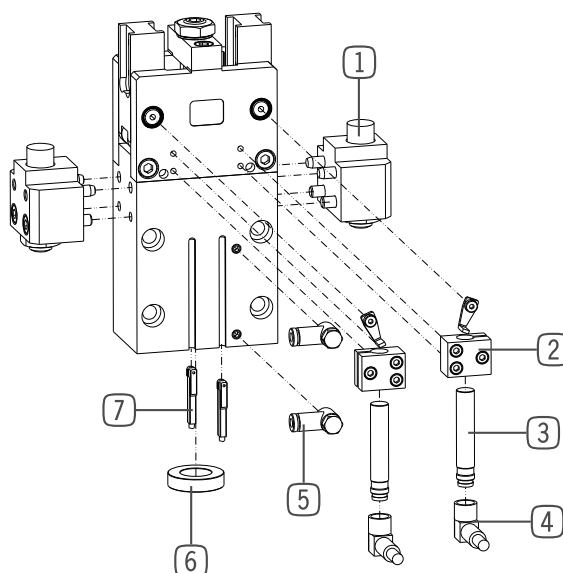
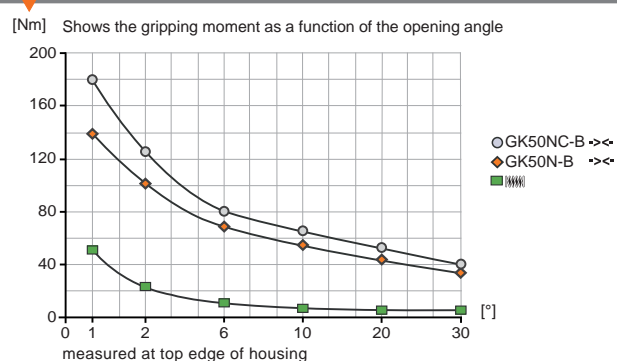
Gripping moment diagram

► Installation size: **GK50**

Dimension			Forces and moments		
B [mm]	H [mm]*	T [mm]	Mr [Nm]	My [Nm]	Fa [N]
100	214	64	28	40	800

Technical Data**				
Order no.	Stroke per Jaw [°]	Weight [kg]	Gripping moment closing [Nm]	Gripping force closing [N]
GK50N-B	90	3.5	150	3500
GK50NC-B	90	4.1	183	4250

Gripping moment diagram



Recommended accessories:

① Buffer stop

To match	Order no.:
GK15	PB15
GK20	PB20
GK25	PB25
GK35	PB35
GK40	PB40

② Mounting block

To match	Order no.:
GK15	KB3

* included in delivery

③ Inductive proximity switch

Version: Cable 5 m	
To match	Order no.:
GK15	NJ3-E2
GK20	NJ8-E2
GK25	NJ8-E2
GK35	NJ8-E2
GK40	NJ8-E2
GK50	NJ8-E2
Version: Cable 0.3 m / Connector M8	
To match	Order no.:
GK15	NJ3-E2SK
Version: Connector M8	
To match	Order no.:
GK20	NJ8-E2S
GK25	NJ8-E2S
GK35	NJ8-E2S
GK40	NJ8-E2S
GK50	NJ8-E2S

④ Plug-in connector

Version: Angled / Cable 5 m / Socket M8	
To match	Order no.:
for all	KAW500
Version: Straight / Cable 5 m / Socket M8	
To match	Order no.:
for all	KAG500

⑤ Pneumatic fittings

Version: Angled	
To match	Order no.:
GK15	WVM5
GK20	WVM5
GK25	WVM5
GK35	WVM5
GK40	WVM5
GK50	WV1/8X6
Version: Straight	
To match	Order no.:
GK15	GVM5
GK20	GVM5
GK25	GVM5
GK35	GVM5
GK40	GVM5
GK50	GV1/8X6

⑥ Centering disc

To match	Order no.:
GK15	ZE12H7X4
GK20	ZE20H7X4
GK25	ZE20H7X4
GK35	ZE25H7X6
GK40	ZE30H7X4
GK50	ZE30H7X6

⑦ Magnetic field sensor

Version: Angled / Cable 5 m	
To match	Order no.:
for all	MFS103KHC
Version: Straight / Cable 5 m	
To match	Order no.:
GK20	MFS204KHC
GK25	MFS204KHC
GK35	MFS204KHC
GK40	MFS204KHC
GK50	MFS204KHC
Version: Angled / Cable 0.3 m / Connector M8	
To match	Order no.:
for all	MFS103SKHC
Version: Straight / Cable 0.3 m / Connector M8	
To match	Order no.:
GK20	MFS204SKHC
GK25	MFS204SKHC
GK35	MFS204SKHC
GK40	MFS204SKHC
GK50	MFS204SKHC

Supplementary accessories:**Flow control valves**

To match	Order no.:
GK15	DRVM5X4
GK20	DRVM5X4
GK25	DRVM5X4
GK35	DRVM5X4
GK40	DRVM5X4
GK50	DRV1/8X6

Pressure safety valve

To match	Order no.:
for all	DSV1/8

Plug-in conversion connector

Version: Straight / 3-pole / Connector M8	
To match	Order no.:
for all	S8-G-3
Version: Straight / 3-pole / Connector M12	
To match	Order no.:
for all	S12-G-3